

16 SHOUT

14 1/8 NOTES

3

3

8 (3/8+5/8)

GUMBO

9 (GUMBOIZATION OF 8) CALL & RESPONSE

11 RIFF RESPONSE

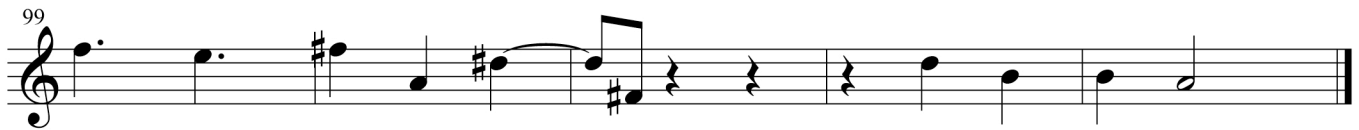
BASS (5/8 response to 9, or gumboized 5)

10 PRINCIPAL GUMBO LINE (Complementary opposite to 8 & 9)

12 (mix of 4 & 10)

13 (mix of 7 & 10)

17 a derived melody



18 6+5+4



Eb

permeations gumvindabooloo

INTERLUDE

The first system of the interlude consists of two staves. The top staff is in treble clef with a key signature of one flat (Bb) and a 2/4 time signature. It contains a melodic line with a repeat sign and a first ending. The bottom staff is labeled "bass register instruments" and contains a bass line with a repeat sign and a first ending. The time signature changes to 3/4 and then back to 2/4.

The second system of the interlude consists of two staves in treble clef. Both staves have a key signature of one flat (Bb) and a 2/4 time signature. The top staff contains a melodic line with a repeat sign and a first ending. The bottom staff contains a bass line with a repeat sign and a first ending.

LOOP

The loop section consists of a single staff in treble clef with a key signature of one flat (Bb) and a 2/4 time signature. It contains a melodic line with a repeat sign and a first ending. The number 12 is written above the staff at the beginning.