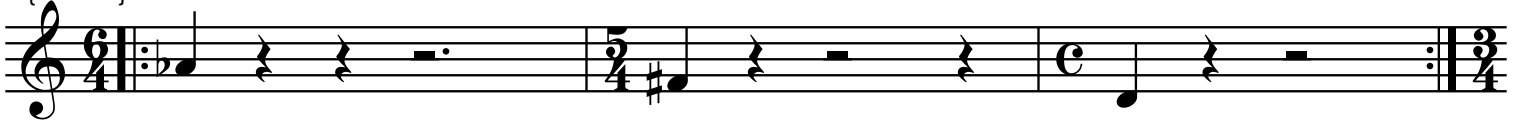


# VINDALOO

# permeations gumvindaboloo

concert

1 (6+5+4)



2 (5/4)



3 (3/4)



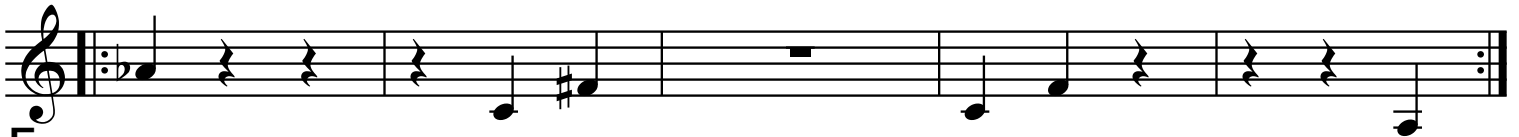
4 PRINCIPAL LINE (5/4+3/4)



BACKSHADOW VARIATION



FORESHADOW VARIATION



5 (5/8)



6 (5/8+3/4)



7 (3/8)



15 1/4 NOTES



16 SHOUT

14 1/8 NOTES

8 (3/8+5/8)

# GUMBO

9 (GUMBOIZATION OF 8) CALL & RESPONSE

11 RIFF RESPONSE

BASS (5/8 response to 9, or gumboized 5)

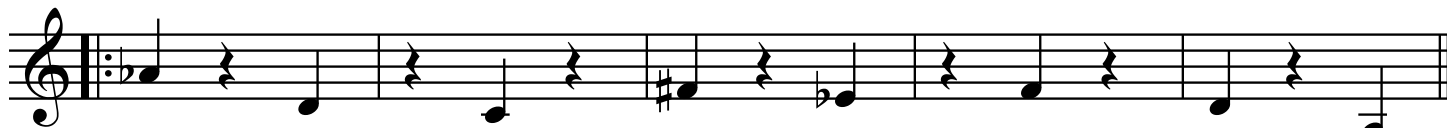
10 PRINCIPAL GUMBO LINE (Complementary opposite to 8 & 9)

12 (mix of 4 & 10)

13 (mix of 7 & 10)

# Additional Moves

19 (2/4)



5 (5/8) BACKSHADOW



5 (5/8) FORESHADOW



2 (5/4) BACKSHADOW



7 (3/8) BACKSHADOW



7 (3/8) FORESHADOW



13.5 (5+4 in 9) COMPLEMENT TO 13



13.5 (5+4 in 9) COMPLEMENT TO 13



13 (5+4 in 9)



17 a derived melody



18 6+5+4



# INTERLUDE

The first system of the interlude consists of two staves. The top staff is in treble clef and the bottom staff is in bass clef. The music is divided into measures with time signatures of 2/4, 5/8, 2/4, 5/4, and 2/4. The first measure of the top staff contains a melodic line with a repeat sign. The bottom staff is labeled "bass register instruments" and contains a corresponding bass line. The piece concludes with a double bar line.

The second system of the interlude consists of two staves. The top staff is in treble clef and the bottom staff is in bass clef. A measure number "7" is written above the first measure of the top staff. The music continues with a melodic line in the top staff and a bass line in the bottom staff. The piece concludes with a double bar line.

# LOOP

The loop section consists of a single staff in treble clef. A measure number "12" is written above the first measure. The music begins with a repeat sign and continues with a melodic line. The piece concludes with a double bar line.