

16 SHOUT

14 1/8 NOTES

8 (3/8+5/8)

GUMBO

9 (GUMBOIZATION OF 8) CALL & RESPONSE

11 RIFF RESPONSE

BASS (5/8 response to 9, or gumboized 5)

10 PRINCIPAL GUMBO LINE (Complementary opposite to 8 & 9)

12 (mix of 4 & 10)

13 (mix of 7 & 10)

Additional Moves

19 (2/4)



5 (5/8) BACKSHADOW



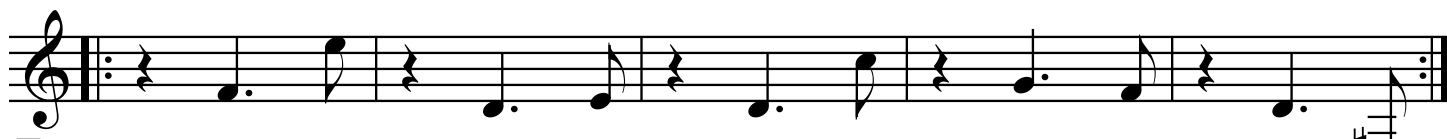
5 (5/8) FORESHADOW



2 (5/4) BACKSHADOW



7 (3/8) BACKSHADOW



7 (3/8) FORESHADOW



13.5 (5+4 in 9) COMPLEMENT TO 13



13.5 (5+4 in 9) COMPLEMENT TO 13



13 (5+4 in 9)



17 a derived melody



18 6+5+4



Bb

permeations gumvindaboloo

INTERLUDE

musical notation for the first system of the interlude. It consists of two staves. The top staff has a treble clef and a key signature of one flat (Bb). The time signature changes from 2/4 to 5/8, then back to 2/4, then to 5/4, and finally back to 2/4. The bottom staff is labeled "bass register instruments" and has a bass clef. It also has a treble clef and a key signature of one flat. The time signature changes from 2/4 to 5/8, then back to 2/4, then to 5/4, and finally back to 2/4. The notation includes various note values, rests, and repeat signs.

musical notation for the second system of the interlude. It consists of two staves. The top staff has a treble clef and a key signature of one flat. The time signature is 2/4. The bottom staff has a bass clef and a key signature of one flat. The time signature is 2/4. The notation includes various note values, rests, and repeat signs. A measure number "7" is written above the first measure of the top staff.

LOOP

musical notation for the loop section. It consists of a single staff with a treble clef and a key signature of one flat. The time signature is 2/4. The notation includes various note values, rests, and repeat signs. A measure number "12" is written above the first measure.